

LinkUp!

SSPiN — Support Staff & Paraprofessional interest section Newsletter ~ Fall 2008 Issue ~ 11/06/2008



SSPiN (Support Staff & Paraprofessional interest section)

Hi and Welcome from the Southwest Corner of Minnesota...

I'd like to introduce myself and tell you all just a little bit about who I am. My name is **Chris Lang** (most of the time it's just Chris from Plum Creek). Funny how we sometimes "become" our jobs—but I regress. I came to Plum Creek in January of 1981. I was hired as a temp to help prepare a survey for mass mailing. I'm not sure how it all happened exactly...but each day I'd come to work, and each day there would be work for me to and pretty soon, there I was - getting a regular paycheck. Back in the early days of PCLS, there were just the three employees, Director Tom Scott, the Administrative Assistant Jo Erbes, and I. My main title was Clerk-Typist but for a few years, I also ran the delivery route a couple days a week. In the mid-eighties, I went back to school and got my AA degree from Worthington Community College (now MNWest). About the time that I was finishing up school, Jo and her husband decided to move to the Twin Cities, so I was asked if I wanted to apply for her job... and whalla...I applied, got the job, and am STILL here... Plum Creek has certainly grown since those early days...and I'd like to think I have too (well in some ways anyway, but you know what I mean).

I got involved in SSPiN quite by chance actually, by attending a meeting that was held during the Branch Out Conference in Duluth. It took me a while, but finally understood that Branch Out and SSPiN were two totally different organizations. I've tried to be somewhat active in both ever since.

I'm humbled by the title of "SSPiN Chair" but that's what I am this year and my personal goal is to represent all of you when doing such things as MLA program planning, MLA membership drives, etc. so contact me (clang@plumcreeklibrary.net) with all your ideas...!!!

SSPiN is not an island unto ourselves; we ARE MLA along with the other subunits. I value and appreciate each and every one of you and hope to get to know you all a little better as the year goes by.

So until the next time I sit in the "Chair's Corner"... have a great one!

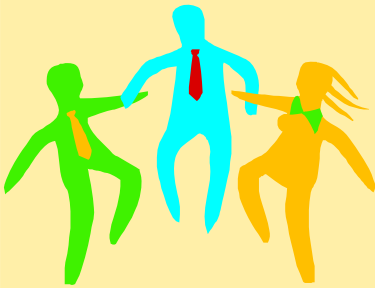
PS... A couple of little known "Chris" facts:

- 1) When I started my work at Plum Creek, I would have anxiety attacks every time my boss asked me to make a phone call ☺ Yeah... that was me... and
- 2) When I came back to PCLS as their Office Administrator, I was asked what my least favor thing to do would be...my response was "I don't think I'll like doing Minutes"... and guess what... after 20 years ... they are STILL my least favor things to do!!!



Chris Lang, 2008 SSPiN Chair

COMMITTEE
VOLUNTEERS 2008



(Asterisk indicates that the member was not present; their participation must be confirmed.)

Nominating committee

Jacki Betsworth, Tracy Hvezda, Chris Lang

Certification liaison

* Rebecca Patton

Legislative liaison

* Jeanne Whetstone

Membership committee

Chris Lang, JoAnn Toussaint, Irma Fridley

Newsletter committee

Rita Schultz, Jacki Betsworth

Promotions committee

Irma Fridley, Jacki Betsworth

Una Lamb Paraprofessional Award

Jacki Betsworth, Irma Fridley, Tracy Hvezda

SSPiN Advocate Award

Jacki Betsworth, Irma Fridley, Tracy Hvezda



MINNESOTA
LIBRARY
FOUNDATION

Lunch for Libraries

Putting a Positive SSPiN on a Worthy Cause

One of the many gifts SSPiN members bring to the MLA table is a love of organizing; another is a flair for event planning. So it just makes sense that two SSPiNners, also Minnesota Library Foundation Board members, volunteered to serve up a fine feast for mouths and minds at MLF's new fundraising endeavor, **Lunch for Libraries**. Building on the Foundation's successful Opus and Olives fundraiser model, SSPiN members Nancy Hegdahl and Jacki Betsworth teamed with MELSA Office Manager Judy Todd and Minnesota Department of Employment and Economic Development Communications Specialist Carol Walsh to flesh out the Foundation's vision for a literary luncheon to benefit Minnesota libraries.

The team met weekly to coordinate speakers, location, sponsors, and advertising, and even created hand-crafted invitations and programs. Early morning caramel rolls were vital to the process!

The event was held on the Macalester College campus on a beautiful day in mid-June. The nearly 100 attendees were treated to a summer luncheon and a delightful hour of entertainment by guest author Lorna Landvik. Landvik, well-known for her humorous fiction, also signed copies of her latest book, *The View From Mount Joy*.

Planners, guests, and board members all deemed Lunch for Libraries a great success and a "keeper." Funds raised will increase Minnesota Library Foundation's ability to fund grants for Minnesota Libraries. We hope to come back to the table for seconds, with another great author, more good food, and an even larger turnout, in summer, 2009. Please join us!

For more information about Lunch for Libraries, contact Jacki at betsworth@macalester.edu.



(left to right) (seated) Nancy Hegdahl, Lorna Landvik
(standing) Judy Todd, Carol Walsh, MLF Chair Judy Nelson, Jacki Betsworth



*Minnesota Library
Association Foundation*

2008 SILENT AUCTION CONTRIBUTION FORM

I would like to contribute the following item(s) and/or service(s)*:

**If providing a service, please state time limit or any other limitation (e.g., 10 hours of weeding books, 1 hour massage, etc.)*

Type of Donation: Corporate Personal

<u>Description Of Item/Service</u>	<u>Value</u>

Company: _____

Contact: _____

Address: _____

Phone: () _____ Fax: () _____

Please fax this completed form to: 651-649-3169

If possible, items should be mailed or delivered by Thursday, November 13, 2008 to:

**MLF Silent Auction
1619 Dayton Avenue, Suite 314
St. Paul, MN 55104**

Contributions are tax deductible to the extent provided by law.
The Minnesota Library Association Foundation TAX IDENTIFICATION Number is 41-1833179



Support MLA, Support SSPiN: by becoming a new member (or by renewing your current membership)! Join today and save on the 2008 MLA Conference registration. Join/renew in 2009 – save on Branch Out Conference registration as well! The MLA Web site is being updated, so until the membership application is posted, please contact mlaoffice@mnlibraryassociation.org; Tracy Hvezda at thvezda@hclib.org; or Chris Lang at clang@plumcreeklibrary.net for an electronic copy.

The **Support Staff and Paraprofessional Interest Section (SSPiN)** began its history in 1976 as a Minnesota Library Association round table (SSRT).

Its original purpose was to discuss, explore, and communicate the concerns of the non-degreed career library worker.

Inherent in that objective are these goals:

- To promote and encourage development of all library personnel at all job levels
- To provide opportunities for these personnel to meet and exchange information about common concerns
- To plan for and to present programs at conferences which explore these concerns

SSPiN achieved section status in 1996.

Currently, SSPiN sponsors programs at the annual Minnesota Library Association Conference and at Branch Out, a biannual statewide conference created for personnel from public, special, academic, and other libraries.

To become a member of SSPiN, you must first be a member of the Minnesota Library Association. Current charges for membership are based on a scale according to income. The MLA charges an additional \$5.00 for membership in individual sections. This money helps fund programs, events, and speakers addressing concerns of library support staff.

Some past initiatives have examined pay equity, alternative careers, guidelines for standardization of library job descriptions, computer applications for support staff, and quality control in libraries.

Your suggestions for future programming are an important part of shaping our future. Please take the time to forward them to our leadership.

Why Join SSPiN???

- Do you have a need for stimulation and communication in your library job?
- Do you want to move toward more common goals with other library workers?
- Are you looking for more continuing education opportunities?
- Do you just want to talk with people who do the same work you do?

Your membership in the Support Staff and Paraprofessional Interest Section can be a highly effective means for achieving one or all of these goals. Each and every one of us, and the jobs we do, are important and vital to keeping Minnesota libraries strong and the cornerstones of our communities, which they are meant to be.

Since 1976, SSPiN has worked to provide a variety of meaningful ways for library personnel to participate more fully in library activities, both as individuals and as part of a thriving state organization. Its various members include support staff, librarians, and library friends.

Be part of a professional organization
SSPiN & GROW
your way through
MLA